

**USC** Viterbi

School of Engineering



Graduate Engineering Programs at USC





# GET TO KNOW US

- [University of Southern California](#)
- [Viterbi School of Engineering](#)
- [Master's Programs](#)
- [Doctoral Programs](#)
- [Tuition & Scholarships](#)
- [Internships & Careers](#)
- [Frequently Asked Questions](#)

# Considerations

What is the best fit for your academic and career goals?

- Admissions Requirements
- Interests and Reputation of Faculty
- Course Offerings
- Student Life
- Geographical Location
- Funding Opportunities







**University of Southern California**



# USC

- One of the world's leading private research universities
- Oldest private university in western U.S.
- Diverse student population
- 21 academic schools & divisions
- Located in Los Angeles
- 375,000+ alumni worldwide







**Los Angeles, California**



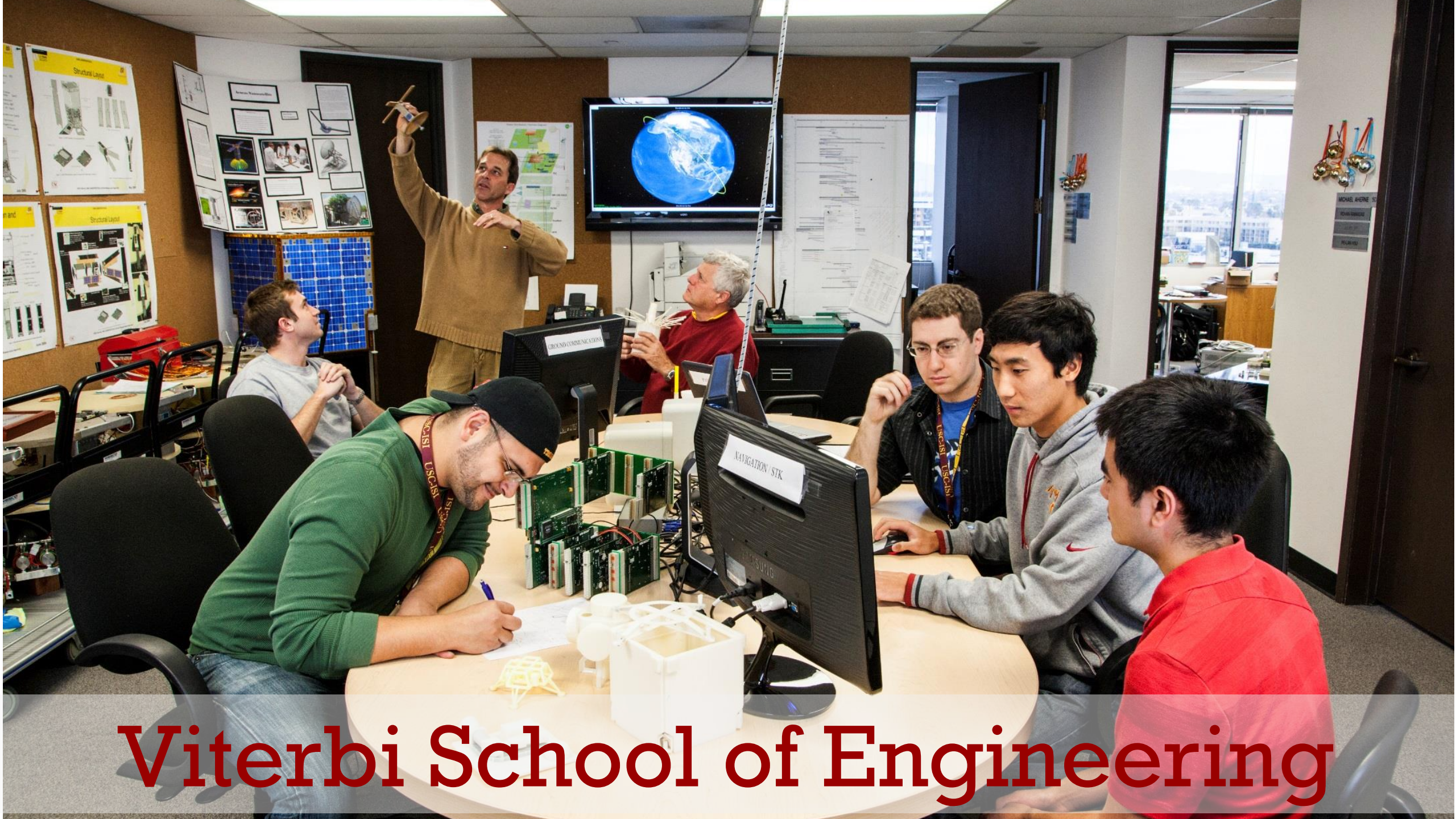
# Our Fair City

- Global center for arts, technology and international business
- Over 100 museums and 225 theatres
- 292 sunny days out of the year
- Hires more engineering graduates than any other city



LOS ANGELES





**Viterbi School of Engineering**



# The Viterbi School

USC Engineering began  
in

**1905 >>**

Today: **2,600 Undergrad**  
**5,200 Graduate**

**8** Academic >>  
Departments

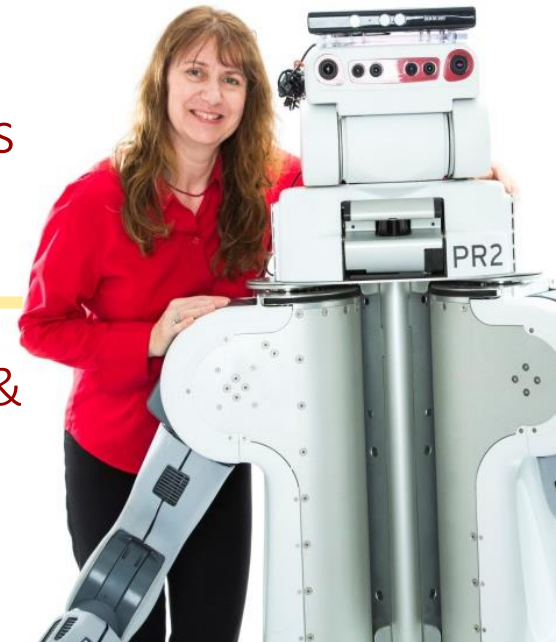
**60** Master's Programs

**13** Ph.D. Programs

**Top ranked**  
**Graduate Engineering**  
**School** \**U.S. News & World Report*

**185**  
Tenure Faculty

**45** Research Centers &  
Leader in funded  
research





# Academic Departments



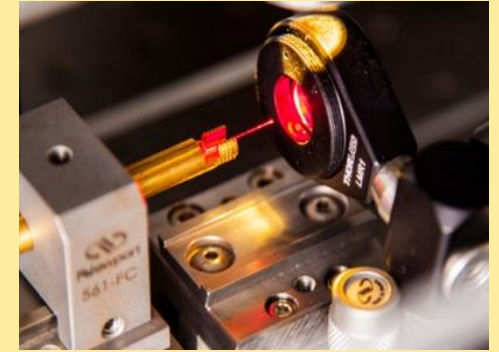
Aerospace & Mechanical  
Engineering



Astronautical  
Engineering



Biomedical  
Engineering



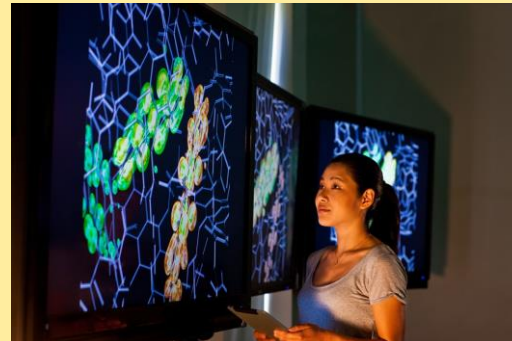
Chemical Engineering &  
Materials Science



Civil & Environmental  
Engineering



Computer Science  
& Division of Informatics



Electrical  
Engineering



Industrial & Systems  
Engineering



# Division of Informatics

- Newly formed division within Computer Science department
- Specialized programs in
  - Communication Informatics
  - Spatial Informatics
  - Data Informatics
  - Cyber Security

[Informatics.usc.edu](http://Informatics.usc.edu)







**Entrepreneurship & Innovation**



# Innovation

- USC's stake in "Silicon Beach":

*Southern California is the fastest growing community of tech entrepreneurs in the U.S.*

- Viterbi Student Innovation Institute: [vsi2.usc.edu](http://vsi2.usc.edu)
- Entrepreneurship Competition: [maseeh.usc.edu](http://maseeh.usc.edu)

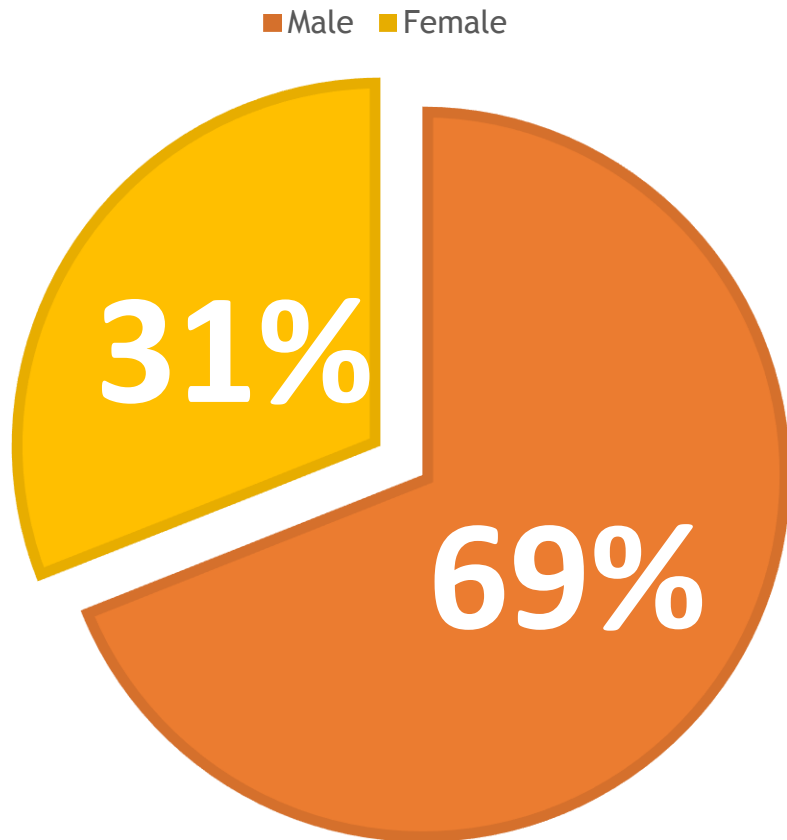
Learn more at [incubate.usc.edu](http://incubate.usc.edu)





# Snapshot

## GENDER DISTRIBUTION



- Applicants from over 110 countries
- Most number of women in graduate engineering (1,408)

## Average Cumulative GPA & GRE Scores (Fall 2016)

	MS	PhD
<b>Cumulative GPA</b>	3.45	3.54
<b>GRE (Quantitative)</b>	165	165
<b>GRE (Verbal)</b>	152	153



# Master's Program

- Enhance your expertise in a specific discipline
- Apply your education to working in industry
- Master's program generally takes 1.5-2 years to complete (9-11 courses)
- Course-based program (lecture, discussion, lab)
- Thesis option





# Master's Application Requirements

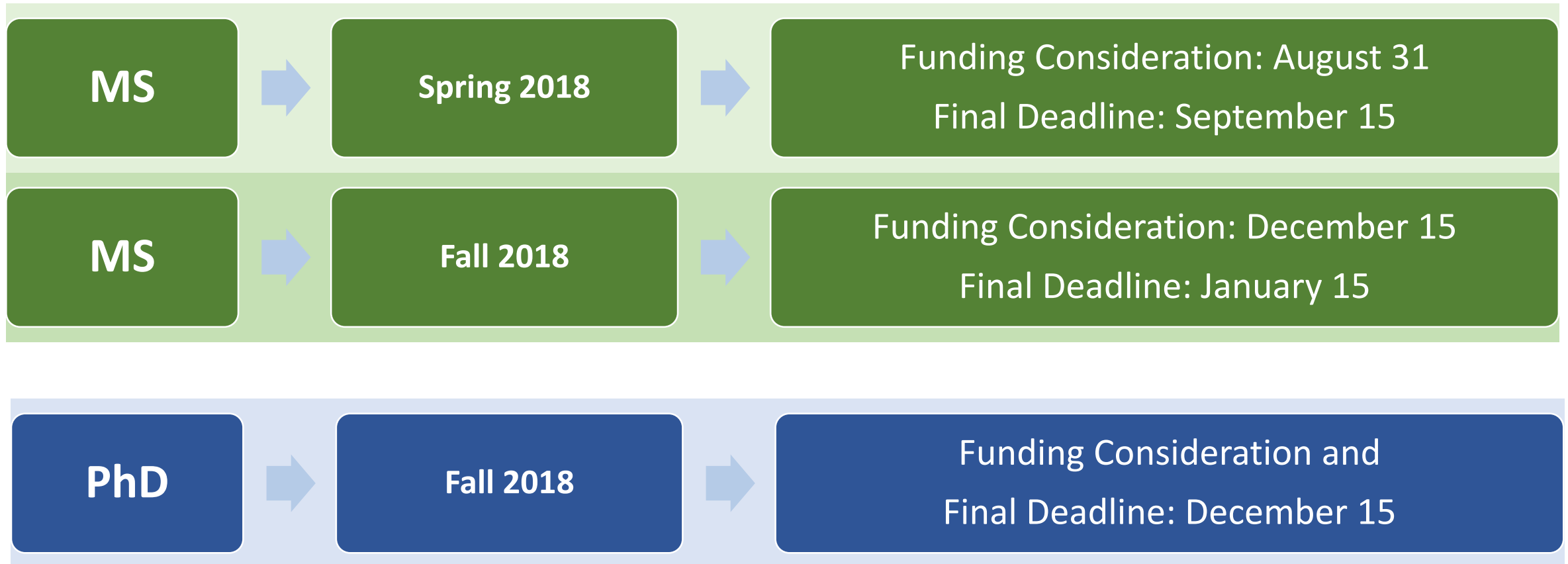
- BS Degree in engineering/computer science, math, or hard science
- Online Application + \$90 Application Fee
- GRE General Exam
- Official Transcripts (uploaded online AND mailed to USC)
- Supplemental Materials (depending on program) - SOP, LORs, resume

## International Student Additional Requirements

- Statement of Financial Support
- TOEFL/IELTS



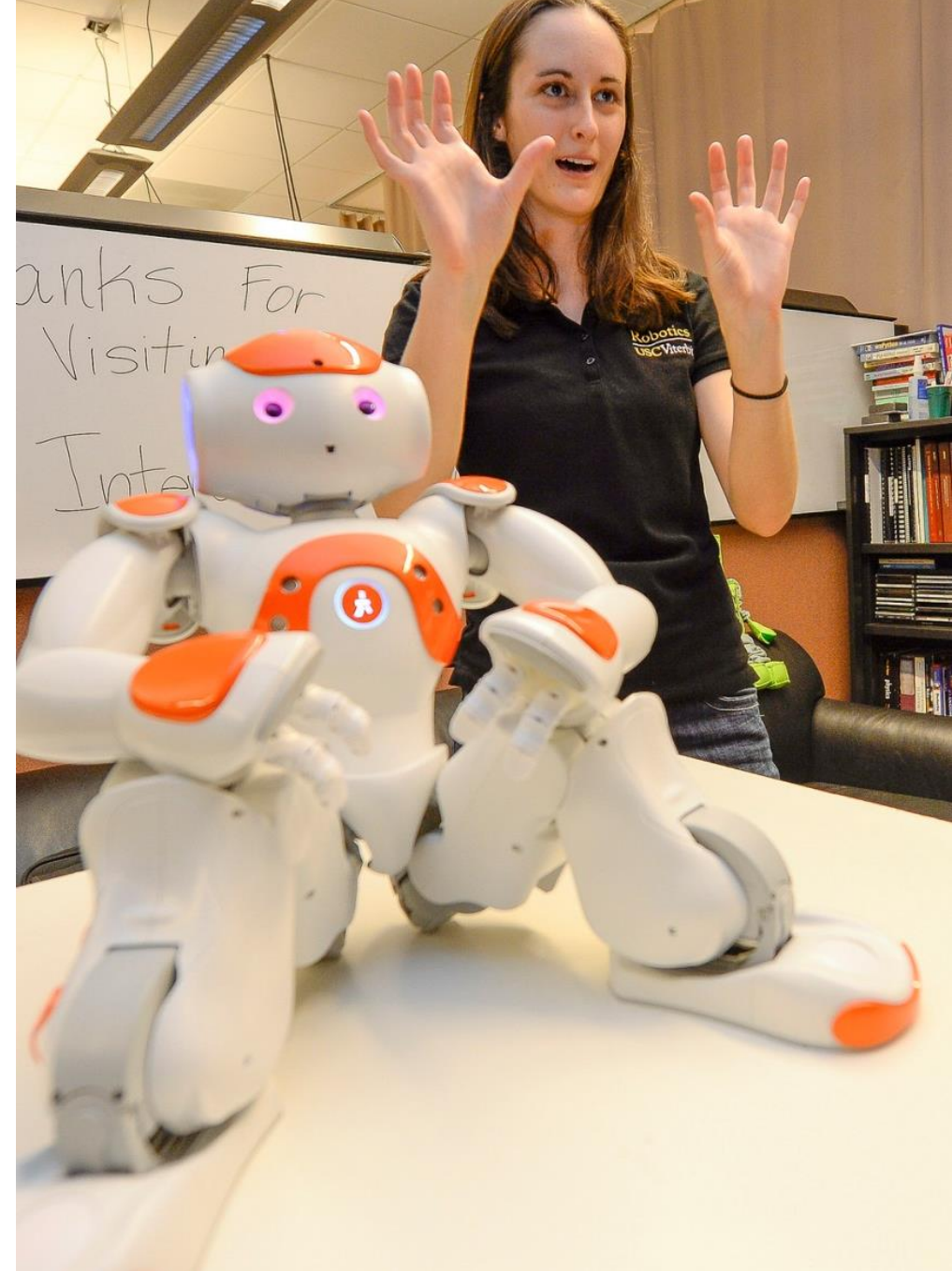
# Graduate Application Deadlines





# Doctoral (PhD) Program

- Strong interest in research
- PhD program generally takes 5 years to complete
- USC aims to fully fund PhD students
- Admission decisions made by Faculty Committee





# PhD Application Requirements

- BS Degree in engineering/computer science, math, or hard science
- Online Application + \$90 Application Fee
- GRE General Exam
- Official Transcripts (uploaded online AND mailed to USC)
- Supplemental Materials - SOP, LORs, resume
- *Demonstrated research ability*

## International Student Additional Requirements

- TOEFL/IELTS





# Tuition and Funding



# Master's Program Tuition (27 units)

Semester	Tuition & Fees	Year 1 Total
Fall (6 units)	\$12,083	\$29,916
Spring (9 units)	\$17,833	

Semester	Tuition & Fees	Year 2 Total
Fall (9 units)	\$17,833	\$24,044
Spring (3 units)	\$6,211	

**Approximate total program cost (2 years): \$53,960\***

\*All amounts are based on 2017-2018 rate of \$1,937/unit. Tuition and fees are subject to change without notice.



# Scholarships & Funding

Award	Amount	Application Requirements
Dean's Master's Scholarship	\$5,000-20,000	<ul style="list-style-type: none"><li>• Open to U.S. and Int'l students</li><li>• App + transcripts submitted by August 31<sup>st</sup> / December 15<sup>th</sup></li></ul>
Chevron Fellowship	\$20,000	<ul style="list-style-type: none"><li>• Energy-related major: ChE, MASC, PTE</li><li>• U.S. citizens ONLY</li><li>• App + transcripts submitted by August 31<sup>st</sup> / December 15<sup>th</sup></li></ul>

For other sources of funding, visit our [Scholarships page](#).



# Internships and Careers



# Career Services

## Events

- Viterbi Career Fair
- Career Conference
- Industry networking events
- Various information sessions

## Resources and Workshops

- Resume advising
- CPT and OPT training
- Interview strategies
- Job searching
- Networking tips and salary resources

[viterbi.careers@usc.edu](mailto:viterbi.careers@usc.edu)



# Internship Opportunities

## **CPT**

### **Curricular Practical Training**

- SEVIS legislation applies
- Allowed after two full semesters in F-1 status
- Full-time work allowed in summer and final semester for degree
- Must be degree related

## **OPT**

### **Optional Practical Training**

- Post Graduation
- SEVIS legislation applies
- Up to 24 months
- Can be full-time
- May be outside LA



# Summer Internships

A partial list of where some of our international students intern

20<sup>th</sup> Century Fox  
AMD  
Amazon  
Amgen Inc.  
Apple  
Bose  
Broadcom  
Cisco  
Citrix Systems  
Disney  
Dreamworks

Dun & Bradstreet  
Ericsson  
Google  
Hewlett-Packard  
Intel  
MathWorks  
Medtronic  
Motorola  
NVIDIA  
Orbit Industries  
Panasonic

Qualcomm  
Samsung  
SanDisk  
Siemens  
Sony  
Symantec  
Tenacore  
Tesla Motors  
Vmware  
Xilinx  
Yahoo!

# Where are Viterbi Alumni working?



Nadia Kadkhodayan  
M.S., Petroleum Engineering  
US Dept of Interior  
Petroleum Engineer

Chris Laures  
M.S., SAE  
McKinsey  
Engagement Consultant



Sam Sharma  
M.S., SAE  
Dreamworks  
R&D Software Engineer

To see more, visit [gapp.usc.edu/alumni-snapshot](http://gapp.usc.edu/alumni-snapshot)



# Frequently Asked Questions

## **Q: Are TAs and RAs available for Master's Students?**

TA and RA opportunities are generally reserved for doctoral students, but there are many on-campus jobs for which Master's students can apply, such as bookstore, computer lab, or administrative work.

## **Q: Do I need to have a faculty contact to apply to the PhD program?**

No, you do not. However, it is helpful to list the faculty and research projects in which you are interested in working with in your SOP.

## **Q: What should I write in my Statement of Purpose?**

You should describe your reasons for applying to the program, your preparation for this field of study, study interests, future career plans, and other aspects of your background and interests which may aid in evaluating your aptitude and motivation for graduate study.

# Continued

## Q: Can I apply to multiple programs?

You may apply for a maximum of *two graduate programs within the Viterbi School*, though we strongly encourage you to narrow your selections to only programs for which you are interested and eligible. To apply for an additional program, a unique multiple programs waiver must be provided by the USC Graduate Admission office and must be entered into the online application.

## Q: When can I expect an application decision?

Most admission decisions are issued between January and April for the fall semester. To check your application status, log into your application.



# Next Steps

- Explore PhD Programs at [viterbi.usc.edu/phd](https://viterbi.usc.edu/phd)
- Explore MS Programs at [viterbi.usc.edu/msdegrees](https://viterbi.usc.edu/msdegrees)
- Current student blog at [viterbipulse.usc.edu](https://viterbipulse.usc.edu)
- See a list of on-campus and online events at [gapp.usc.edu/prospective](https://gapp.usc.edu/prospective)
- Check out our Frequently Asked Questions page at [gapp.usc.edu/FAQ](https://gapp.usc.edu/FAQ)

# Viterbi App for iPad/iPhone

Available on Apple App Store:





# Contact Us

*William Schwerin*

*Associate Director, Graduate Recruitment*

Graduate & Professional Programs

USC Viterbi School of Engineering

[viterbi.gradprograms@usc.edu](mailto:viterbi.gradprograms@usc.edu)

