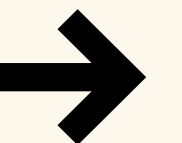


FACTS AND FIGURES

# Astronautical Engineering

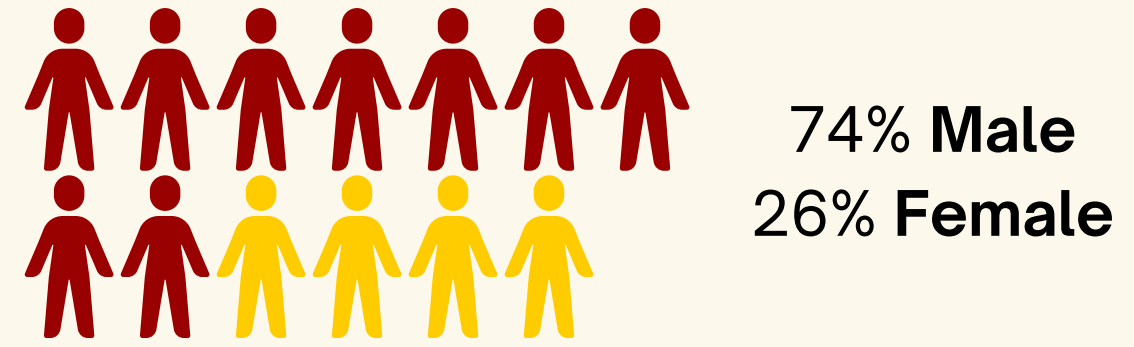
**USC** Viterbi  
School of Engineering



# Graduate Student Overview

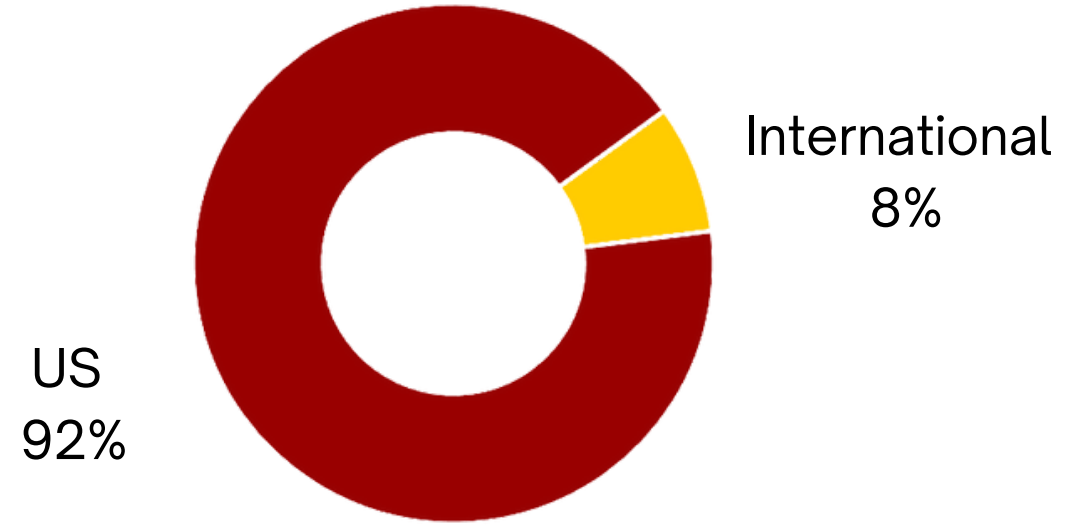
*\*\* Source: Based on Spring 2022 enrollment data*

### CLASS SNAPSHOT

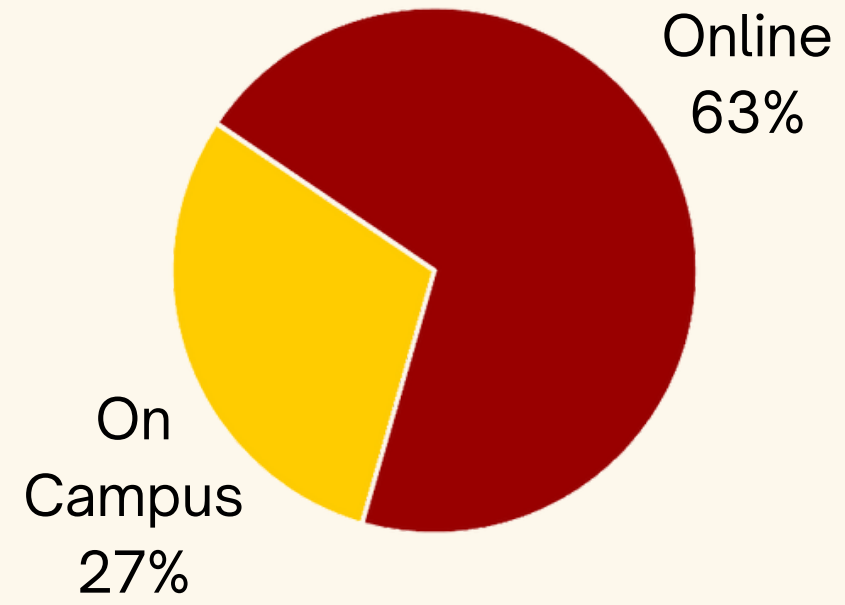


**199** Students Enrolled

### COUNTRY OF ORIGIN



### ONLINE OR ON CAMPUS



### DEGREE OBJECTIVE

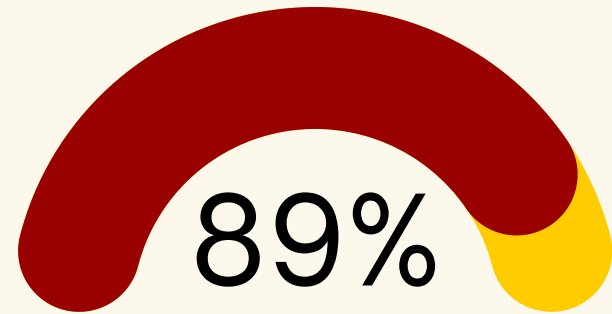
**94% Master's**



**6% PhD**

Program(s): Astronautical Engineering

### WITHIN 6 MONTHS OF GRADUATION..



secured employment or are pursuing higher education

### TOP CPT COMPANIES

Beamlink, Inc.  
General Motors  
Exo-Space

# Graduate Student Overview

### TOP JOB TITLES REPRESENTED

Aerospace Systems Engineer  
Systems Engineer  
Mechanical Engineer  
Principal Systems Engineer  
Propulsion Engineer

### TOP HIRING COMPANIES

/ABL Space Systems  
/Boeing  
/NASA Jet Propulsion Laboratory  
/Northrop Grumman Corporation  
/Raytheon Technologies  
/SpaceX  
/The Aerospace Corporation

\*\* Sources: Self-reported exit survey based on 2020 and 2021 graduated Master's and PhD students, 2022 enrolled graduate students

FACTS AND FIGURES

# Astronautical Engineering

**USC** Viterbi  
School of Engineering

